

# tousimis® touchscreen 931

Recipe Capable CPD with "Stasis Software" \*



 **tousimis**

## **Chamber Size Choices**

- The Advanced 931 SAMDRI® Critical Point Dryer Series is now available in 1.25", 2.50" and 3.40" chamber sizes.

## **Recipe Capability**

- The Autosamdri®-931 enables the operator to program and save specific recipes especially useful for making Aerogels.

## **Standard Innovations**

- Integrated field proven tousimis® innovations: EZ Access Post Purge Filter, Chamber Inserts LCO<sub>2</sub> Filtration, Slow Fill ...

## **Sample Holder Choices**

- Various sample holders available for multiple applications including one capable of retaining particles to 2 µm.

## **Stasis Software**


- The Autosamdri®-931 series comes with "Stasis Software" (Patent Pending) specific for Drying Gels and other various challenging sample types.

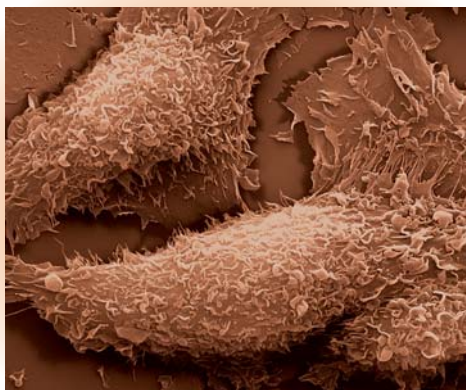
## **Reproducibility**

- The Autosamdri®-931 delivers a new level of Precision Process Control enabling Automated Reproducible Results.

*... celebrating 40 years of CPD innovation ...*

## FEATURES

- Bright LCD Touchscreen Control
  - Use Factory Default Settings or Create Custom Recipes
  - Micro Metering Valves with Easy View Vernier Handles
  - 'Slow Fill' Control for the most delicate Sample Types
  - Internal Particulate Filtration down to 0.08um \*
  - Fast Adiabatic Chamber Cooling (Less than 60 seconds for 1.25" Process Chamber)
  - External mounted Post Purge Filter Assembly allows EZ maintenance
  - Internal SOTER™ Condenser separates waste alcohol and CO<sub>2</sub>, eliminates both Static discharge, exhaust freeze up. and purge exhaust noise.
  - Illuminated Process Chamber for exact process flow viewing
  - Non-Mechanical Purge Stirring (Patent Pending) eliminates moving parts for easy maintenance
  - "Stasis Software" (Patent Pending) with complete range control for Gels and more challenging sample types
  - "Stasis Software" (Patent Pending) takes advantage of lower density and viscosity parameters of both LCO<sub>2</sub> and alcohol for complete LCO<sub>2</sub> replacement during traditionally difficult sample process runs
  - Compact Cabinet with Small Foot Print static free design
- 
- Electronic components meet CE, UL and/or U.S. Military specifications
  - Low Power Consumption and minimal facility requirements
  - Global Service and Support
  - Made in U.S.A.



SKBR3 Breast Cancer Cells CPD Processed by  
Dr. Rita Serda, Ph.D., The University of Texas  
Health Science Center at Houston

## SPECIFICATIONS

- Cabinet: (W) 15.0" (38.0cm) x (H) 13.25" (33.5cm) x (D) 20" (50.8cm)
- System Set-Up Area Required: (W) 24" (61cm) x (D) 22" (56cm)
- Chamber size: Available in three sizes
  - 1.25" ID x 1.25" Depth (31.75mm ID x 31.75mm Depth) - 25 ml Volume
  - 2.50" ID x 1.25" Depth (63.50mm ID x 31.75mm Depth) - 100 ml Volume
  - 3.40" ID x 1.25" Depth (86.36mm ID x 31.75mm Depth) - 186 ml Volume
- Pressure Gauge Range: 0- 2000 psi, Temperature Range - 40°C to 60°C
- Available in either 120V or 220V Versions
- Resistive Touchscreen VGA LCD

## STANDARD ACCESSORIES

- Flexible High Pressure LCO<sub>2</sub> Supply Hoses for easy site installation  
Non-Cleanroom 5ft (1.5m) Cleanroom 10ft (3.0m)
- LCO<sub>2</sub> System Delivery Filtration down to 0.5µm
- Flexi-Exhaust Tubing provided for EZ installation.
- Flow Meter allows precise BLEED Exhaust Rate Flow Control
- Spare chamber O-ring (2), chamber lamps (2), and 5A slo-blow fuses (2)
- User Manual and Check-Out Data Sheet
- 2 year warranty on all parts and labor
- Free lifetime technical support



Released Cantilevers after Thermal Annealing  
Nicolas André, Université Catholique de Louvain,  
Belgium

Visit our web site at [tousimis.com](http://tousimis.com) or contact us about the various sample holders.

\* U.S. patented (# 6,493,964) or patent pending.

**Note:** Actual delivered model or accessories may vary slightly as advancements are integrated into systems.