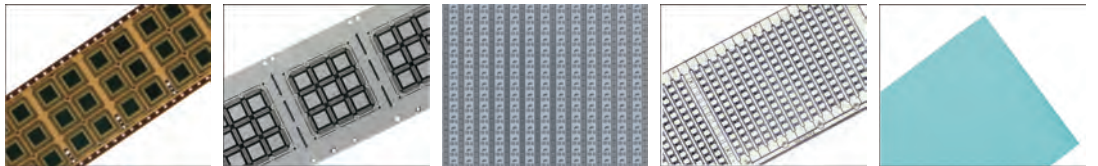


ULTIMATE PERFECTION
TECHNOLOGY

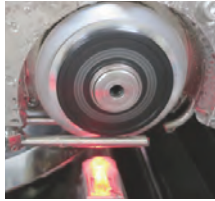
DICING SAW

Dicing saws use dicing blades to cut silicon, glass, and ceramic workpieces with a high degree of accuracy.



NANO 150G

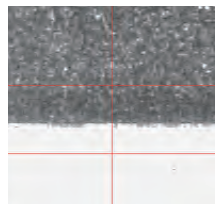
DICING SAW



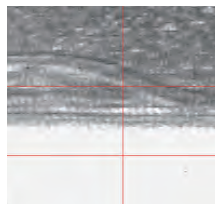
Pioneer

Visual Cutter Setup

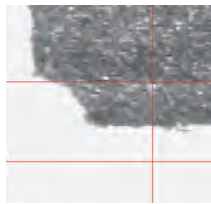
On-line observation of blade condition



Normal



Abnormal



Broken knife

Visual Cutter Setup

Faster and precise setup combined with on-line blade observation.

Unique Z-axis Design

Realizes high stability.

Innovative Vacuum System

Reduces 60% air consumption.

Significantly reduce carbon footprint.

Shortening Execution time of cutter setup

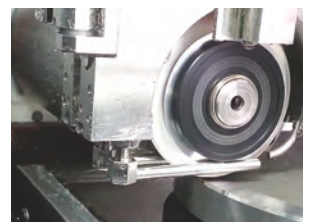
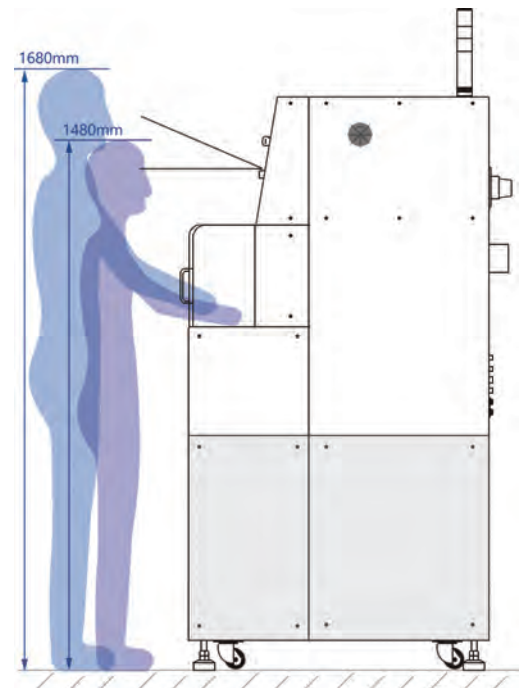
VCS is faster than traditional photoelectric sensor.

Increase work proficiency and improve productivity.

Improved operability

Ergonomic sloped touch screen design provides proper visual angle and is easy to use.


User-friendly operating interface.




SPECIFICATIONS

Item	Descriptions	unit	NANO 150G
Workpiece size			Max. Φ 6" or □ 6"
Spindle	Bearing		Static Air Bearing
	Max. revolution speed	rpm	60000
	Max. ouput	kW	1.2
X axis	Drive		AC Servo Motor
	Cutting range	mm	160
	Max. stroke	mm	267
	Speed range	mm/s	0.1 ~ 300
Y axis	Drive		Stepping Motor
	Cutting range	mm	160
	Moving resolution	mm	0.000125
	Positioning accuracy	mm/mm	0.003/5
		mm/mm	0.005/160
Z axis	Drive		Stepping Motor
	Max. stroke	mm	25
	Moving resolution	mm	0.00025
	Max. Blade O.D.	mm	Φ 60
	Repeatability accuracy	mm	0.001
θ axis	Drive		DD Motor
	Max. Rotating angle	deg	360
	Resolution	sec	0.405
System	Display		15 " Color LCD
	Language		Chinese/English
Utilities	Outline dimensions	mm	650W × 860D × 1580H
	Weight	kg	320
*Specifications are subject to change without notification.			






Reduce
Carbon Footprint



Reduce
Power



Reduce
Setup Times

Reduce

60%

Air
consumption

Reduce per day

12.24

kg CO₂

NANO 320

DICING SAW



High-proficient Automatic Alignment

Equipped with multi-function automatic alignment capable of handling multiple and variant works.



Dual Scope with Different Magnifications

Speed the automatic alignment sequences while keep the precision of positioning.



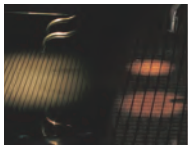
High-stiffness spindle design with low vibration

High performance air-bearing spindle provide reliable and high precision cutting quality.



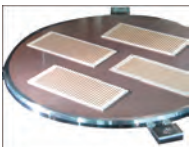
Non-contact Setup

Avoid fruitless blade wearing or damage during setup.
Available during cutting process to enhance cutting reliability and increase productivity.



Axial / Ring Light

Highlight the fiducial marks on workpiece with appropriate lighting.



Variety of Chuck Tables

Accommodate different kinds of table to meet customized requirements.



15" Touchscreen Display

Featuring big size touch panel with graphic user interface.



In-line dressing w/ dressboard

To eliminate operating time. To reduce operating time and cost. To increase productivity.
Enhancing the reliability and productivity of operation.

Facilities Monitoring

Monitor the conditions of water and air supply on real time basis.

Safety Interlocks

Protecting users from being injured.

History Record

Automatically recording all process history and reporting test results.

Blade Breakage Detector

On-line monitoring the blade condition to protect the workpieces from damage by a broken blade.

User Authorization

Determining the tasks that a user is allowed to perform based on the access rights the user has.

SPECIFICATIONS

Item	Descriptions	unit	1.8 kW	2.2 kW (option)
Workpiece size			Φ Max. 12"/Max. 320 mm square (*1)	
X axis	Cutting range	mm	320	
	Max. cutting speed	mm/s	0.1~600	
Y axis	Cutting range	mm	320	
	Index step	mm	0.0001	0.00005 (option)
	Positioning accuracy	mm	0.003 or less /320 (Single error) 0.0005 /2	
Z axis	Max. stroke	mm	32.2	31.4
	Moving resolution	mm	0.0001	0.00005 (option)
	Repeatability accuracy	mm	0.001	
	Max. blade size (*2)	mm	Φ60	Φ127
θ axis	Max. rotating angle	deg	380	
Spindle	Output	kW	1.8 at 60,000 min ⁻¹	2.2 at 30,000 min ⁻¹
	Rated torque(30K PRM)	N · m	0.35	0.70
	Revolution speed range	min ⁻¹	6,000~60,000	3,000~30,000
Applicable tape frame		-	2-12-1	
Utilities	Machine dimensions	mm	1290W × 1180D × 1800H	
	Machine weight	kg	Approx. 1,200 (without transformer for overseas use) Approx. 1,270 (with transformer for overseas use)	
*Specifications are subject to change without notification.				

